

Marville Road, SW6

£1,650,000

BRIK





# Marville Road

£1,650,000	3 Bed	1,510	140	F	£111,750
FREEHOLD	HOUSE	SQ FT	SQ M	COUNCIL TAX	STAMP DUTY

This superb family home is arranged over three floors and offers over 1,500 sq ft (140sq m) of living space. The ground floor comprises a double reception room with wood flooring, feature fireplace, and a bay window, which floods the room with natural light. To the rear is an extended kitchen/breakfast room, with doors leading out onto a south facing patio garden. On the first floor is a principal bedroom with an en suite shower room and built in wardrobes, as well as an additional double bedroom to the rear and separate modern family bathroom. The top floor is a front and rear mansard conversion, currently configured as a large double bedroom with built in wardrobes and en suite shower room. There is further potential to reconfigure or extend the top floor, by adding a 'pod' room over the rear addition of the house, adding a bedroom or bathroom, and creating a 4 or 5 bedroom home, if required. This will be subject to planning permission and any required consents.

Marville Road is a pretty residential street in a prime position, not far from the independent cafés, restaurants and amenities of Fulham Road, Parsons Green and Fulham Broadway. Ideal for couples and young families, the 'Villes' are the perfect place to start life in Fulham. Of the four roads, Marville and Brookville are both extremely sought after, with fully extended houses attracting hordes of buyers. Very well located, these quiet streets are walking distance to Parsons Green and close proximity to a selection of supermarkets, shops and restaurants on both Fulham and Munster Roads. The closest underground station is Parsons Green (District Line, Zone 2) which is 640 metres away, and you can catch regular buses from Fulham Road towards Chelsea. EPC rating - C

- ✓ 3 bedrooms
- ✓ 3 bathrooms
- ✓ Double reception room
- ✓ Kitchen breakfast room
- ✓ South facing garden
- ✓ Great condition
- ✓ Potential to extend (subject to planning)
- ✓ Freehold
- ✓ Approx 1,510 sq ft (140sq m)
- ✓ Council tax band - F



Henry Tait-Harris

Sales Associate

020 7384 6790

henry@brik.co.uk











## FULHAM AREA GUIDE

# The Villes

For couples and new families the 'Villes' – a group of four parallel streets all ending in 'ville' – is the perfect place to start family life in Fulham. These tree-lined streets filled, with three to four bedroom Victorian houses, continue to be the stepping stone between a flat and the larger Fulham family homes.

Although these roads used to be somewhat better value than others close by, the Villes are extremely sought after, with fully extended houses attracting hordes of buyers. Very well located, these quiet streets are marginally cheaper per square foot than comparable roads closer to Parsons Green whilst retaining a close proximity to the cafes, restaurants and shops on both Fulham and Munster Roads.

The closest tube is Parsons Green (District Line, Zone 2) that can be reached in only 7-10 minutes. It's a 5 minute walk to the bus routes along Fulham Road and 10-15 minutes to Fulham Broadway's amenities.

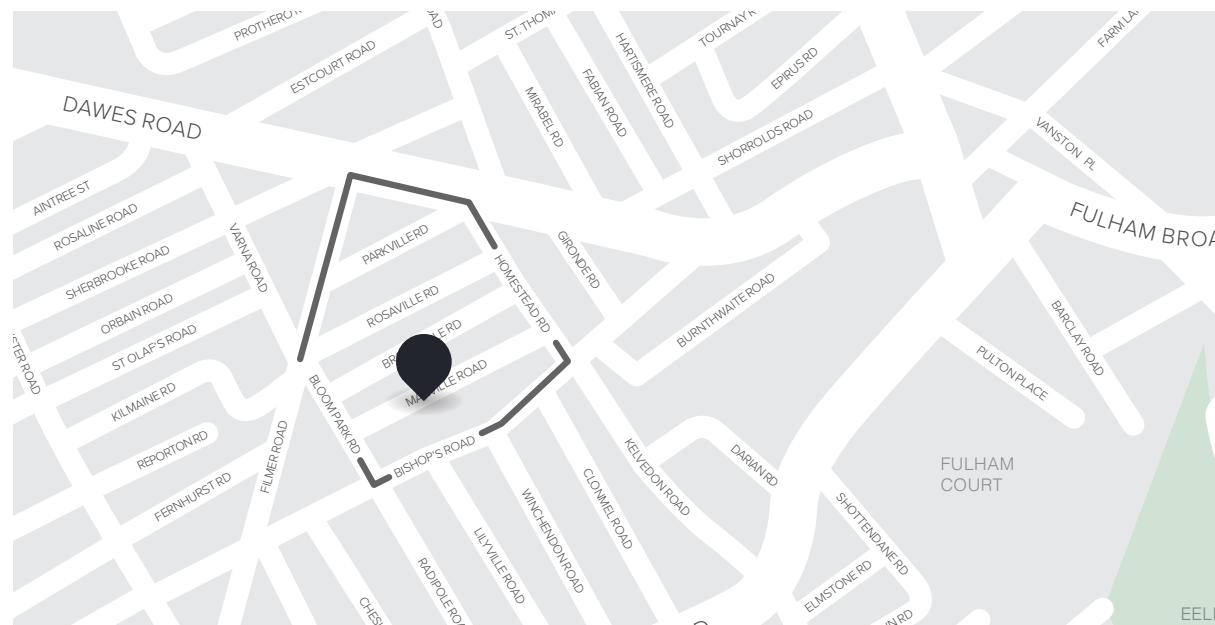
### CLOSEST:

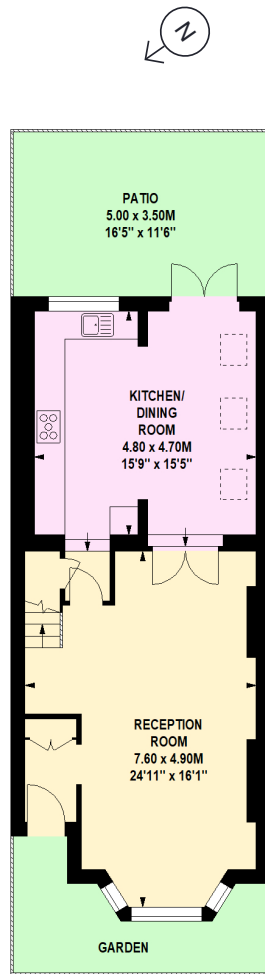
- 🚶 Parsons Green (9 mins)
- 🚶 West Brompton (23 mins)
- 🚶 Eel Brook Common (13 mins)

### KEY:

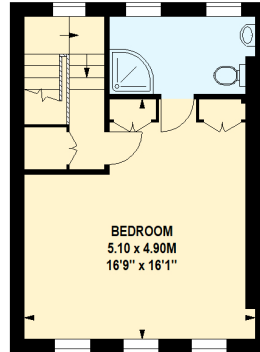
- 📍 Property location
- 'The Villes' area of Fulham

[Read all our Fulham area guides here](#)

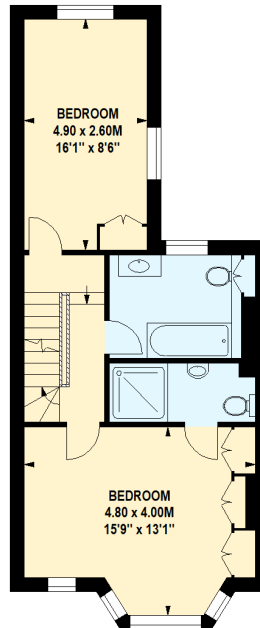




Ground Floor



Second Floor



First Floor